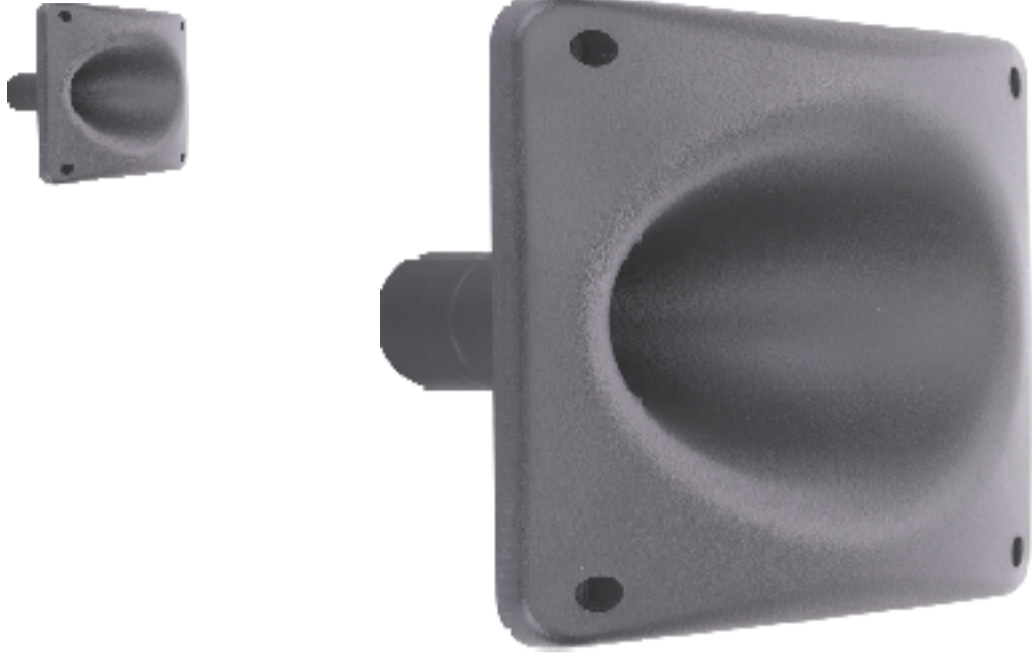


### H1SC-8050



- Lightweight horn flare with 1" throat exit
- Compatible for use with screw on compression drivers
- Exponential horn flare with 80° x 50° radiation pattern
- 1.5kHz cut-off frequency
- Hard-wearing reinforced ABS

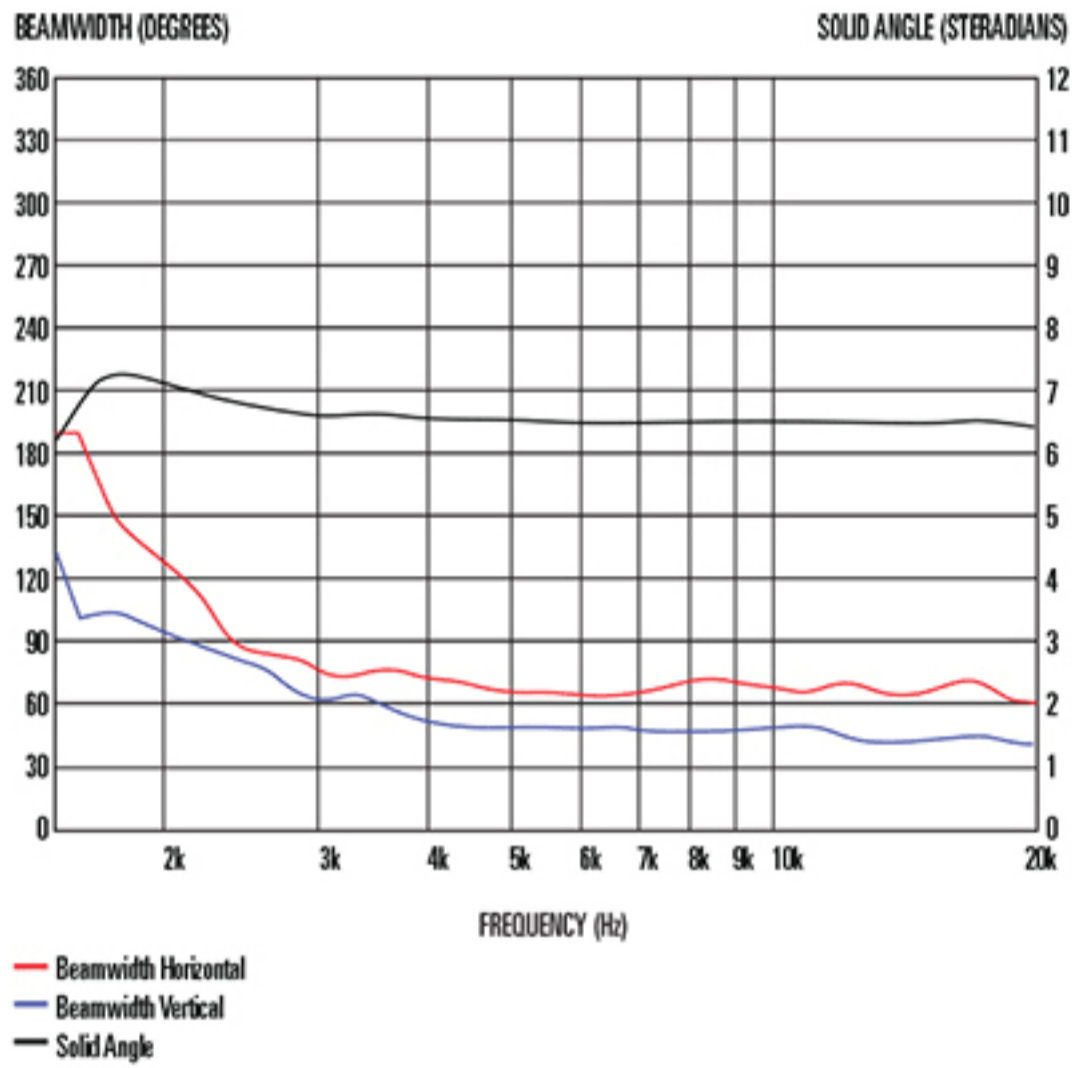
### General Specifications

Horn type	Exponential
Radiation pattern	80 &deg; x 50 &deg;
Horn material	ABS
Baffle cut-out	155mm/6.1in
Driver mounting detail	Screw (35mm, 1.38in diameter)
Throat exit	25.4mm/1in
Height	178mm/7in
Width	178mm/7in
Depth	88mm/3.46in
Weight	0.2kg/0.44lb

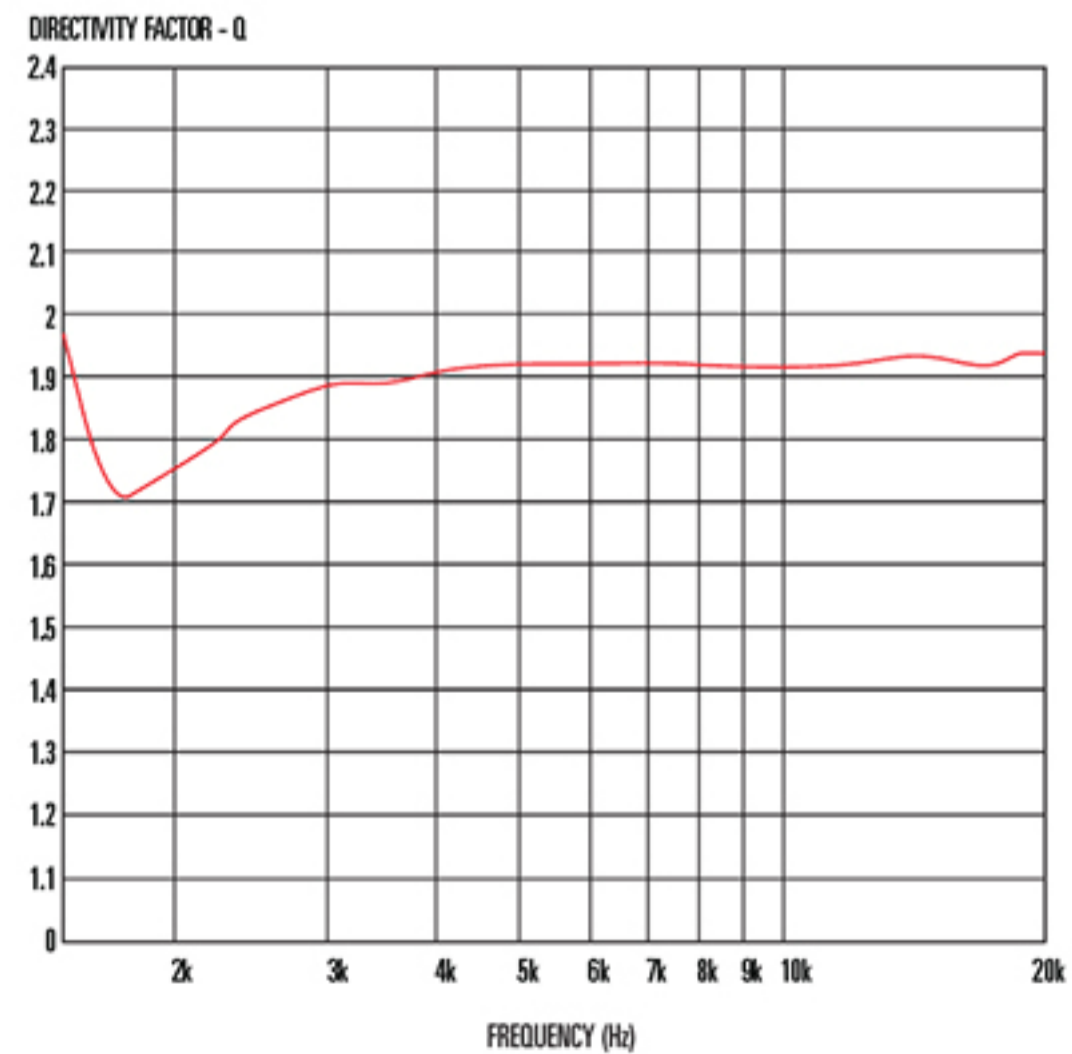
### Packed Dimensions & Weight

Single pack size W x D x H	186mm x 186mm x 102mm /7.3in x 7.3in x 4in
Single pack weight	0.22kg/0.48lb

### 8 Frequency Response



### Beamwidth and Solid Angle



### Directivity Factor