

# Millenium

## VESA Stand Wall

### User manual

This manual contains important information on the safe operation of the device. Read and follow the safety advice and instructions given. Retain the manual for future reference. If you pass the device on to others please include this manual.

### Safety instructions

#### Intended use

This device is used as a wall mount for devices with VESA bracket. Any other use or use under other operating conditions is considered to be improper and may result in personal injury or property damage. No liability will be assumed for damages resulting from improper use.

#### Danger for children



Ensure that plastic bags, packaging, etc. are disposed of properly and are not within reach of babies and young children. Choking hazard! Ensure that children do not detach any small parts (e.g. knobs or the like) from the unit. They could swallow the pieces and choke! Never let unattended children use electrical devices.

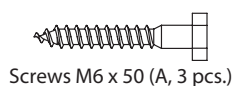
#### General handling

- Never immerse the appliance in water. Just wipe it with a clean dry cloth. Do not use liquid cleaners such as benzene, thinners or flammable cleaning agents.

#### Keep foreign substances from the unit!

Keep the device away from containers with liquids. Should any liquid get into the unit, this could lead to its destruction or fire. Be sure not to let any metal objects into the unit.

### Scope of delivery



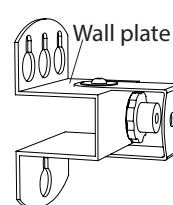
Screws M6 x 50 (A, 3 pcs.)



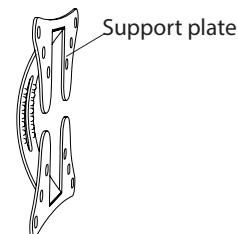
Dowel 8 x 40 (B, 3 pcs.)



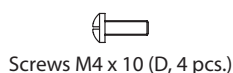
Washer Ø 6 (C, 7 pcs.)



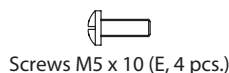
Wall plate



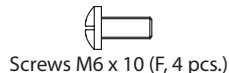
Support plate



Screws M4 x 10 (D, 4 pcs.)



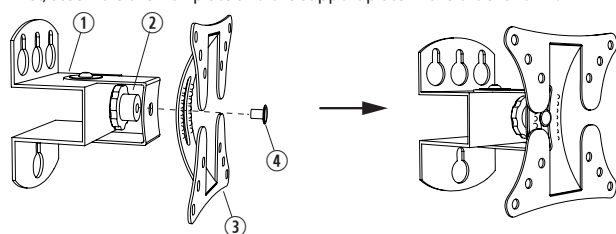
Screws M5 x 10 (E, 4 pcs.)



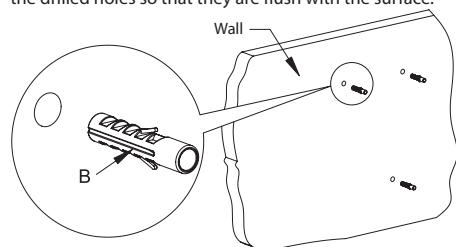
Screws M6 x 10 (F, 4 pcs.)

### Assembly

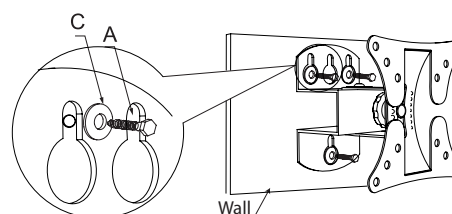
1. First, assemble the wall plate and the support plate in the order shown:



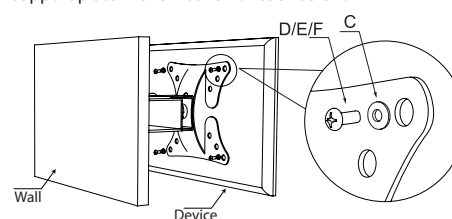
2. Use the wall plate as a template and drill 3 holes with 8 mm diameter and 60 mm depth into the wall or mounting surface. Then insert one dowel each into the drilled holes so that they are flush with the surface.



3. Place the wall plate over the drill holes and fix the wall plate to the mounting surface with the 3 x M6 screws and one washer each.



4. Choose the appropriate screw set (D, E or F) and fix the back of the device to the support plate with a washer for each screw.



5. To adjust the desired angle towards the wall ( $\pm 20^\circ$ ), loosen the hand screw, adjust the angle and then re-tighten the hand screw.

### Technical specifications

Hole spacing:	50 x 50, 75 x 75 or 100 x 100 (VESA)
Maximum load capacity:	15 kg
Inclination angle:	$\pm 20^\circ$



For the transport and protective packaging, environmentally friendly materials have been chosen that can be supplied to normal recycling. Ensure that plastic bags, packaging, etc. are properly disposed of. Do not just dispose of these ma-

terials with your normal household waste, but make sure that they are collected for recycling. Please follow the notes and markings on the packaging.